



OLSON MULTIFAMILY
COMMUNITIES



**WESTCLIFF
APARTMENT
HOMES**



OLSON MULTIFAMILY
COMMUNITIES



WESTCLIFF APARTMENT HOMES

Come view our beautifully landscaped grounds and sparkling swimming pools. Treasure the serene intimacy of a small community. Walk to the green lawns at Mariners Park and feel the ocean breeze when you bicycle down to the bay. Enjoy the convenience of walking next door to run errands or eating out at the Westcliff Plaza Shopping Center. Olson Multifamily Communities gives you the privacy and comfort of a small community with the convenience of a central location. Just a few of the great local businesses within walking distance are shown. Explore the neighborhood and see how close we are to the bay and ocean.



Interior Features

- Centralized Air Conditioning in Living Area
- Cable Ready Floorplan
- Designer Two-tone Paint
- Kitchen Stove
- Convenient Dishwasher
- Private Balcony/Patio (per plan)
- Convenient Covered Parking
- Decorator Selected Carpet
- Mirrored Wardrobe Doors
- Ceiling Fans (per plan)
- Privacy Blinds

Property Features

- Classic Coastal Architecture
- Sparkling Pool
- Relaxing Poolside Furniture
- Convenient Laundry Room
- Guest Parking
- Private Storage Area
- Lush Park-Like Landscaping
- Easy Freeway Access to 55, 405 & 73
- Reserved Covered Parking
- Onsite & On-call Maintenance Team
- Pet Friendly



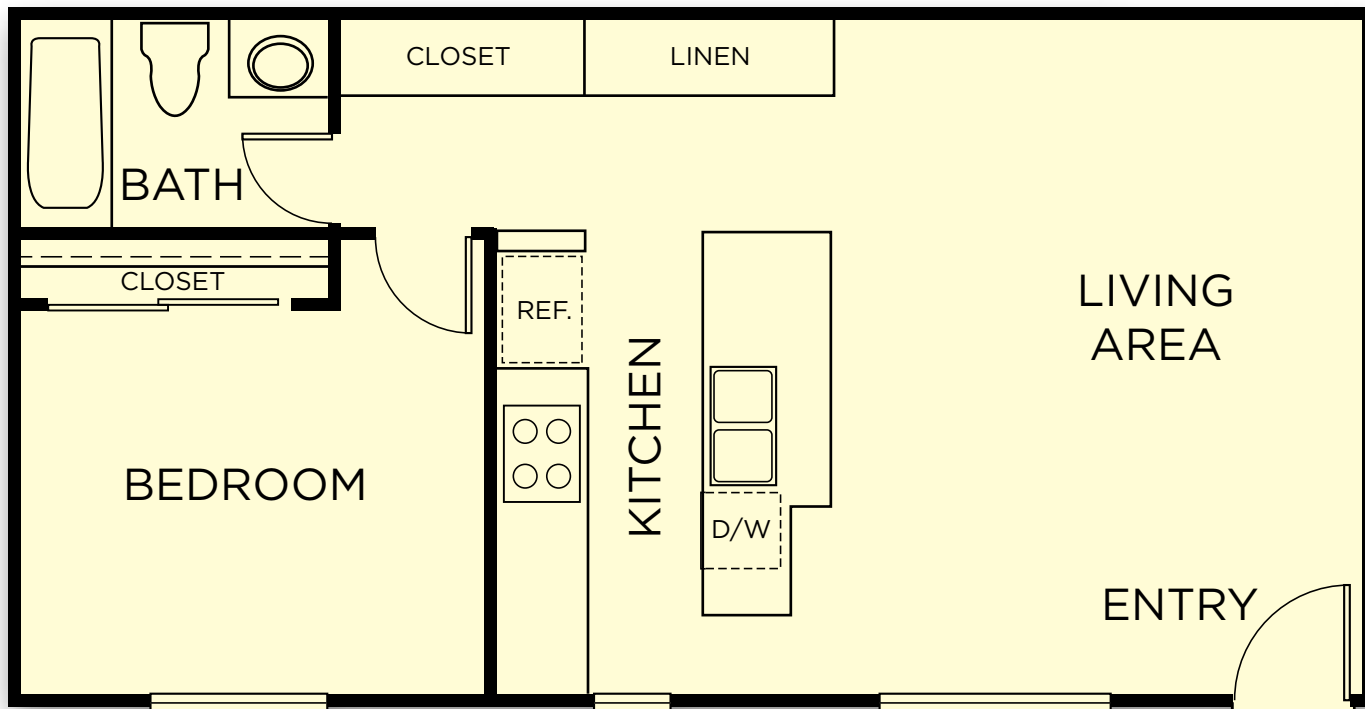


WESTCLIFF APARTMENT HOMES

RESIDENCE ONE

One Bedroom / One Bath • 600-700 Square Feet

Thoughtfully designed living space. Ample counter space in kitchen and breakfast bar. Private patios/balconies. Additional storage at covered parking. Light and airy. Water and trash included.



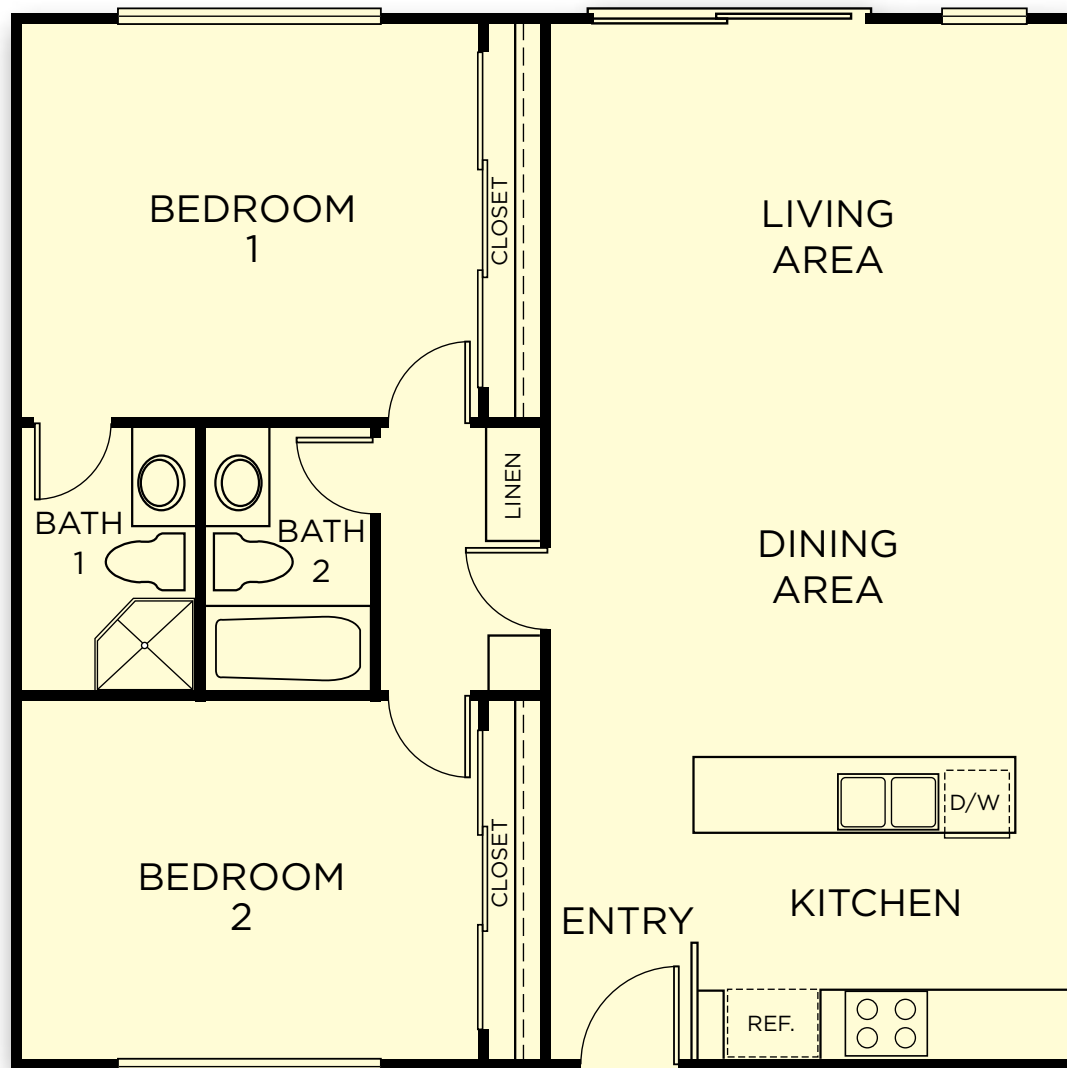


WESTCLIFF APARTMENT HOMES

RESIDENCE TWO

Two Bedrooms / Two Bath • 900 Square Feet

Thoughtfully designed living space. The apartment features two bedrooms, large wardrobes and linen cabinets. Ample counter space in kitchen, and breakfast bar. Private patio/balconies. Additional storage at covered parking. Light and airy. Water and trash included.





WESTCLIFF APARTMENT HOMES

LEGEND

Residence One

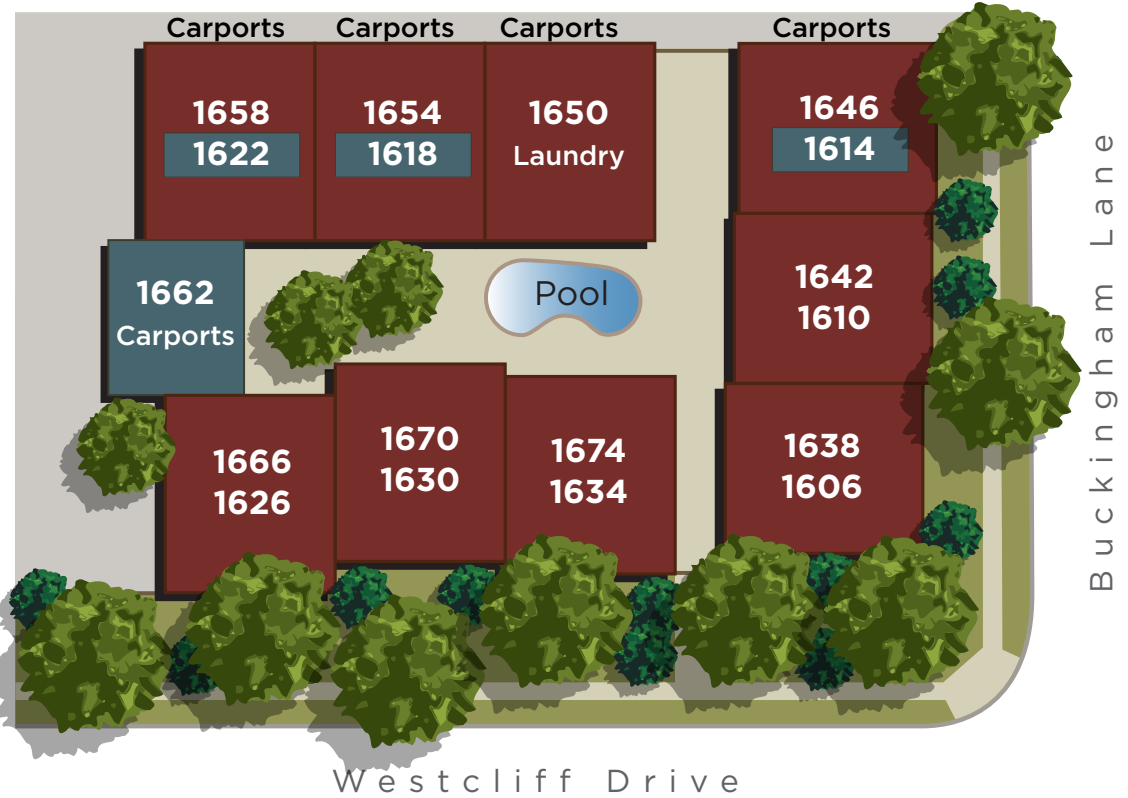
Residence Two

1642 – Upper Residence

1610 – Lower Residence



Map Not To Scale



WESTCLIFF APARTMENT HOMES
 1606-1674 Westcliff Drive
 Newport Beach, CA 92660
 Call 949-645-4898
 OMCApartments.com